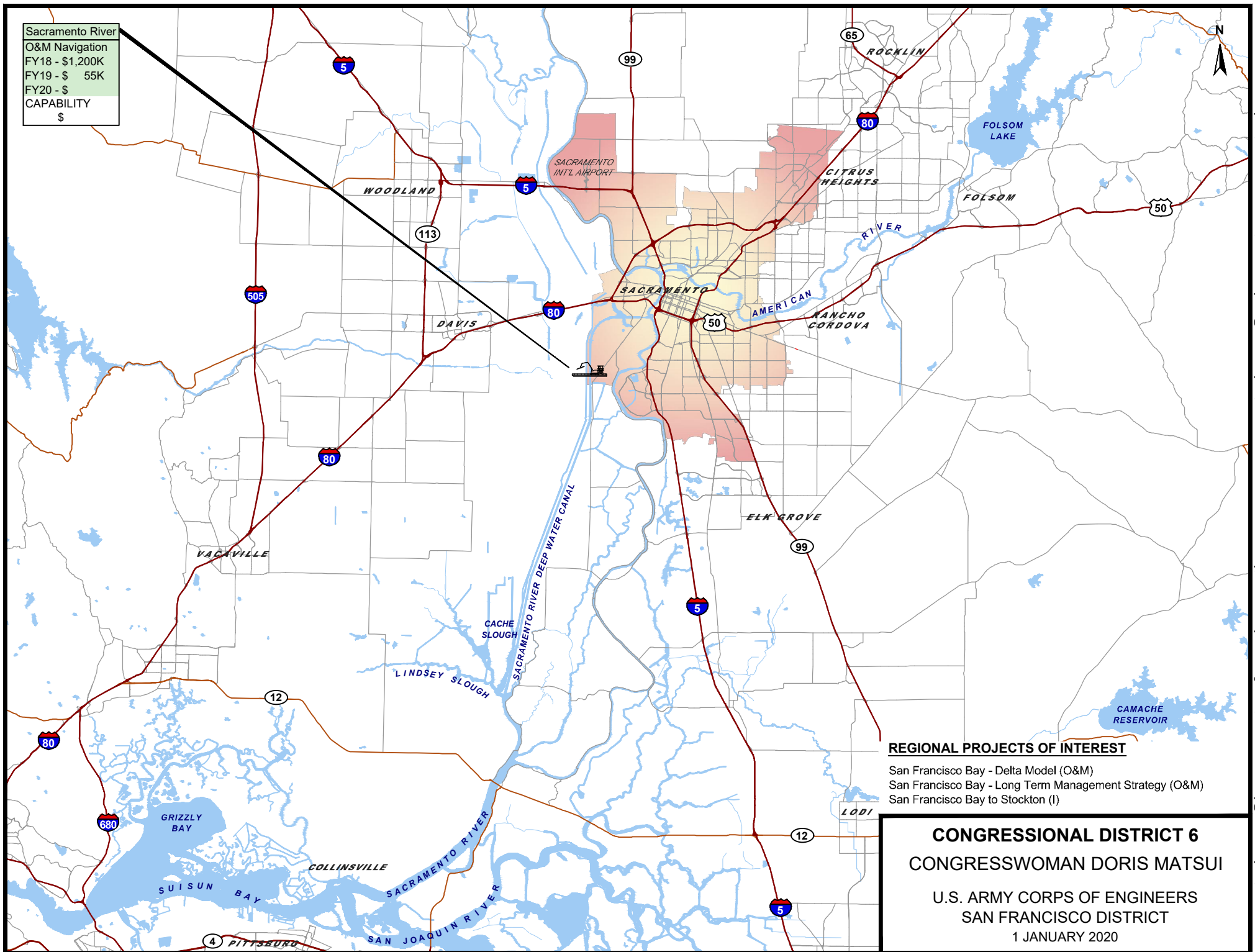


Sacramento River
O&M Navigation
FY18 - \$1,200K
FY19 - \$ 55K
FY20 - \$
CAPABILITY
\$



REGIONAL PROJECTS OF INTEREST

- San Francisco Bay - Delta Model (O&M)
- San Francisco Bay - Long Term Management Strategy (O&M)
- San Francisco Bay to Stockton (I)

CONGRESSIONAL DISTRICT 6
CONGRESSWOMAN DORIS MATSUI
 U.S. ARMY CORPS OF ENGINEERS
 SAN FRANCISCO DISTRICT
 1 JANUARY 2020

POC: LTC Travis J. Rayfield, District Commander, Travis.J.Rayfield@usace.army.mil, 415-503-6700 / Edwin S. Townsley, Chief of Project Management, Edwin.S.Townsley@usace.army.mil, 415-503-6593